

## Closed Swage Terminal Talurit® STTE

### Product information



The STTE swage terminals are validated according to the TALURIT® system for mechanical splicing. Swage terminals are made from special high-quality carbon steel. Controlled mechanical properties by our special treatment for cold swaging.

The STTE swage terminals have an efficiency rating of more than the required 90% of MBL according to the type testing requirement of the EN 13411-8 standard, which includes fatigue testing. In many cases and by ordinary break tests it is common to reach 100% based on the catalog strength of the wire rope.

### APPLICATIONS

Swage terminals or sockets have a wide range of applications from stay wires in bridges to crane ropes and pendant lines. As per the TALURIT system validation, we can offer a range that is suitable for many types of special wire ropes with high tensile grades.

[... Read more](#)

**Features:** STTE is approved for up to 2160 tensile grade wire ropes.

**Material:** TALURIT-Steel, fine grain. Special treatment for cold swaging.

**Marking:** According to standard

**Temperature range:** -40°C – 150°C

**Finish:** Ungalvanised.

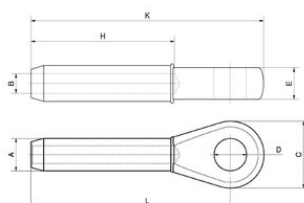
**Standard:** EN 13411-8

**Note:** See the manufacturer's product data sheet in the tab "Document" for guidance on dimension selection.

**Warning:** Swage terminals are not recommended for use on fiber core rope.

## Closed Swage Terminal Talurit® STTE

### Blueprint



### Technical data

Part code	Rope Ø range mm	Size	A mm	B mm	C mm	D mm	E mm	H mm	K mm	L mm	Weight kg
1207STTE14	5.8-6.7	1/4	12.6	6.9	38.1	19.1	12.7	54	111.1	88.9	0.2
1207STTE516	6.8-8.3	5/16	19.6	8.6	42.9	22.2	17.5	81	139.7	114.3	0.3
1207STTE38	8.4-10	3/8	19.6	10.3	42.9	22.2	17.5	81	139.7	114.3	0.3
1207STTE716	10.1-11.7	7/16	24.9	12.3	50.8	27	22.2	108	176.2	146.1	0.7
1207STTE12	11.8-13.3	1/2	24.9	13.9	50.8	27	22.4	108	176.2	146.1	0.6
1207STTE916	13.4-15	9/16	31.9	15.5	63.5	31.8	28.6	134.9	222.3	184.2	1.3
1207STTE58	15.1-16.7	5/8	31.9	17.1	63.5	31.8	28.6	134.9	222.3	184.2	1.3
1207STTE34	16.8-19.8	3/4	39.2	20.2	76.2	36.5	33.3	161.9	263.5	219.1	2.3
1207STTE78	19.9-23.3	7/8	43.2	23.8	88.9	42.9	38.1	188.9	308	257.2	3.4
1207STTE1	23.4-26.6	1	50.2	27	101.6	52.4	44.5	215.9	349.3	292.1	5.1
1207STTE118	26.7-29.8	1-1/8	57	30.2	114.3	58.8	50.8	242.9	387.4	323.9	7.3
1207STTE114	29.9-33.3	1-1/4	64.1	33.7	127	65.1	57.2	269.9	438.2	365.1	10.3
1207STTE138	33.4-36.5	1-3/8	71.1	36.9	133.4	65.1	57.2	296.9	479.4	400.1	13.2
1207STTE112	36.6-39.7	1-1/2	78.1	40.1	139.7	71.5	63.5	323.9	517.5	431.8	17
1207STTE134	39.8-46.7	1-3/4	86	47.2	171.5	90.5	76.2	377.8	609.6	508	25.3
1207STTE2	46.8-53.2	2	99.9	53.6	196.9	96.9	82.6	431.8	698.5	584.2	40.8