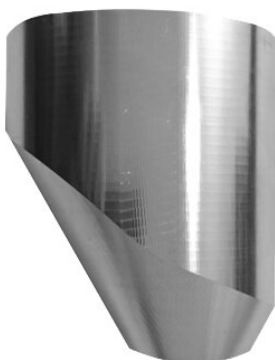


Ferrule Multicone Talurit®

Product information



Multicone – the ultimate accessory for enhanced safety and durability in Ferrule Secured Eye Terminations (FSET). Engineered with a tapered design and crafted from a single piece of aluminum, Multicone minimizes the risk of snagging while ensuring long-lasting performance and offers exceptional longevity with minimal maintenance requirements. The Talurit® Multicone is assembled with ferrules, type T and UM, and is available in different sizes. Furthermore, it can be used with carbon steel turnback ferrules type STS.

The innovative off-center design conceals the steel wire rope's dead end inside the cone without compromising FSET strength. Equipped with an inspection hole meeting EN 13411-3 standards, Multicone facilitates field inspection, providing visual confirmation of the dead-end position.

[... Read more](#)

Material: Aluminium
Marking: According to standard
Standard: EN 13411-3

Ferrule Multicone Talurit®

Technical data

Part code	Ferrule size mm	Length mm
120101800260	18	38.5
120102000260	20	46
120102200260	22	51
120102400260	24	55
120102600260	26	57
120102800260	28	63
120103000260	30	68
120103200260	32	73
120103400260	34	77
120103600260	36	81
120103800260	38	85
120104000260	40	89
120104200260	42	92
120104400260	44	98
120104800260	48	108
120105200260	52	116
120105600260	56	124
120106400260	64	141
120107600260	76	166
120108400260	84	184