

Rope Pear Socket type S

Product information



The pear socket type S is specially designed for endfitting of a steel wire rope, and the breaking load is related to steel wire ropes with a smaller diameter that have a higher breaking load. Such as 8 strand and/or compacted wire ropes.

... [Read more](#)

Material: High grade casted steel.

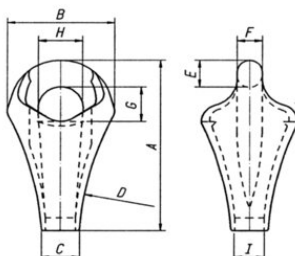
Marking: Manufacturers logo, size and batch number.

Warning: The specified capacities shown are for grab operation. For other applications use safety factor 5:1

Safety factor: 5:1

Rope Pear Socket type S

Blueprint



Technical data

Part code	Code	Rope Ø range mm	WLL ton	MBL	A mm	B mm	C mm	D, mm	E mm	F mm	G, mm	H, mm	I mm mm	Weight kg
122102400110	RPS-924	22-24	11	70	192	133	40	325	31	27	40	58	29	3.8
122102700110	RPS-1026	25-27	13	85	212	143	43	375	35	30.5	43	60	32	4.8
122103000110	RPS-1130	28-30	15	95	239	156	45	400	36	31.5	50	70	35	5.9
122103300110	RPS-1232	31-33	17	110	249	165	52	425	39	34.5	57	72	38	7
122103600110	RPS-1336	34-36	21	125	257	184	55	450	43	36.5	60	80	42	9.3
122104000110	RPS-1440	37-40	26	155	297	192	60	475	47	40	62	80	46	11.6
122104800110	RPS-1548	46-48	30	180	329	192	74	575	51	44	66	80	57	12.4
122104400110	RPS-3221	42-44	32.5	189	314	204	66	425	53	46	70	80	49	13.8
122104800111	RPS-1648	46-48	36	215	343	218	70	500	56	50	75	90	54	15

Rope Pear Socket type S

Combination of the Nemag Rope Pear Socket type S with Nemag Quick Release Link.

A Rope Pear Socket can be fitted to a Quick Release Link of the same size, or to a link with a different size as indicated in table

Pear code:	Link code:
RPS-924	RL-8 / RL-9 / RL-10
RPS-1026	RL-9 / RL-10 / RL-11
RPS-1130	RL-10 / RL-11 / RL-12
RPS-1232	RL-11 / RL-12
RPS-1336	RL-12 / RL-13 / RL-14
RPS-1440	RL-13 / RL-14 / RL-15
RPS-1548	RL-14 / RL-15
RPS-3221	RL-15
RPS-1648	RL-15 / RL-17