

## Horizontal Directional Blocks

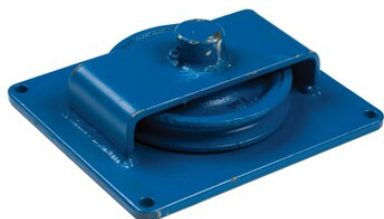
---

### Product information

- No test certificate possible.
- Groove in sheave may be adjusted to other wire rope diameters.

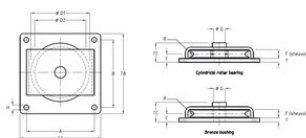
... [Read more](#)

---



## Horizontal Directional Blocks

### Blueprint



### Technical data

Part code	Rope Ø range mm	WLL ton	Bearing	Bearing	A mm	B mm	C mm	D1 mm	D2 mm	F mm	G mm	H mm	T mm	R mm	TA mm	TB mm	TC mm	Ø D1 mm	Ø D2 mm	Ø G mm	Weight kg
140101000211	10	1	Bronze bearing	Bronze	180	150	22.5	125	105	27	22	9	8	5.5	200	170	54	-	-	-	5
140101000213	10	1	Ball bearing	2 x Ball	180	150	22.5	-	-	27	-	9	8	5.5	200	170	54	125	105	22	5
140101200211	12	2	Bronze bearing	Bronze	220	190	31	150	120	40	30	11	10	6.5	250	220	72	-	-	-	10
140101200213	12	2	Ball bearing	2 x Ball	220	190	31	-	-	40	-	11	10	6.5	250	220	72	150	120	30	10
140101400211	14	3	Bronze bearing	Bronze	290	240	33	200	165	40	30	13.5	12	7.5	320	270	76	-	-	-	17
140101400213	14	3	Ball bearing	2 x Ball	290	240	33	-	-	40	-	13.5	12	7.5	320	270	76	200	165	30	17
140101800211	18	4	Bronze bearing	Bronze	360	310	38.5	250	210	45	35	17.5	15	9.5	400	350	86	-	-	-	32
140101800214	18	4	Roller bearing	Straight	360	310	38.5	-	-	45	-	17.5	15	9.5	400	350	86	250	210	35	32
140102000211	20	6	Bronze bearing	Bronze	400	360	46	300	255	50	40	22	20	11	450	410	99	-	-	-	50
140102000214	20	6	Roller bearing	Straight	400	360	46	-	-	50	-	22	20	11	450	410	99	300	255	40	50
140102200211	22	8	Bronze bearing	Bronze	460	420	46	350	305	50	45	26	20	12	520	480	99	-	-	-	70
140102200214	22	8	Roller bearing	Straight	460	420	46	-	-	50	-	26	20	12	520	480	99	350	305	45	70
140102400211	24	10	Bronze bearing	Bronze	530	480	51	400	345	60	50	32	20	13	600	550	113	-	-	-	100
140102400214	24	10	Roller bearing	Straight	530	480	51	-	-	60	-	32	20	13	600	550	113	400	345	50	100

## Horizontal Directional Blocks

---