

Plate Hook Grade 10 BH/S

Product information

For lifting sheet metal stacks and boards.

... [Read more](#)



Material: Alloy steel

Marking: Code and grade

Finish: Violet powder coated.

Note: Recommended angle β of inclination of the sling: 15-30°. To be used with 3 or 4 -leg chain sling.

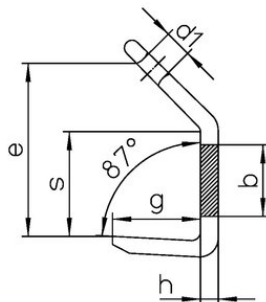
Warning: Not to be heat-treated

Safety factor: 4:1

Grade: 10

Plate Hook Grade 10 BH/S

Blueprint



Technical data

Part code	Code	WLL ton	EWL mm	b mm	d1 mm	e mm	g mm	h mm	s mm	Weight kg
402300250380	BH/S-8-10	2.5	131	50	28	131	55	15	80	1.5
402300400380	BH/S-10-10	4	170	70	36	170	65	20	100	2.8
402300670380	BH/S-13-10	6.7	209	80	40	209	90	25	130	5.3
402301000380	BH/S-16-10	10	263	100	50	263	110	30	160	10.5
402301600380	BH/S-19-10	16	306	120	60	306	130	40	185	17.5
402301900380	BH/S-22-10	19	368	140	75	368	150	50	220	30.5