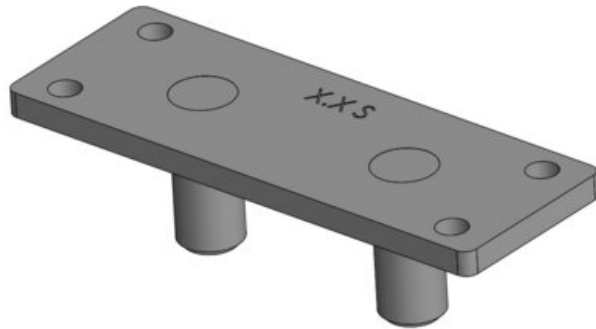


Holding Plate for STA Former Starcon

Product information



A holding plate is used for fastening the STA former to a wooden formwork. The holding plate has 2 pins on which the former is mounted and is fixed with the anchor mounted.

Material: Steel

Finish: Electrogalvanized

Part code	Load grp. t	L mm	B mm	H mm	L1 mm	D mm	d mm	t mm
650351025001	2.5	70	21	24	27	10	5	4
650351050001	5	85	30	24	37	10	5	4
650351100001	10	124	42	44	51.5	12	5	4
650351260001	26	178	65	54	69	16	6	8

Blueprint

