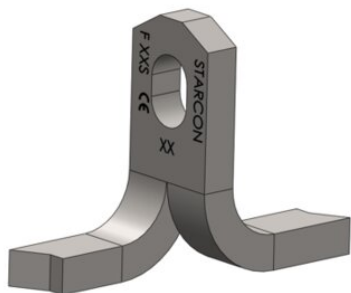


Starcon STA-F flatfoot anchor

Product information



Starcon STA-F, also known as the flat-foot anchor, is ideal for slab, floor and deck elements. As the feet are parallel to the surface, this provides a strong anchorage in thin elements. At the top of the STA anchor, a hole is located for attaching a ring coupling. Reinforcement can be easily and clearly placed on the top of the feet. Designed for large, thin prefabricated elements that are lifted perpendicular to their main surface, this anchor is a robust alternative to the STA-P plate anchor.

Areas of application: Deck and plate elements with installation close to the surface

Advantages: Used for thin elements

The reinforcement is easily placed on the top of the foot.

Quick connection/disconnection with shapes and Starcon ring coupling, perfect for efficient transport and setup.

Load group: 2.5t – 10t

Technical information: CE marking according to MD 2006/42 EF

Starcon product is designed according to EN13155-2009 and follows the guidelines of VDI/BV-BS 6205 and DS/CEN/TR 15728.

EPD: Our Environmental Product Declarations (EPDs) are available in the LCA NO calculator/software. These EPDs have been prepared in strict accordance with ISO 14025 and EN 15804 standards.

Download the EPDs from the LCA database:

Untreated Products: [Starcon Lifting and Handling Systems for Concrete elements - Untreated - EPD Norge](#)

Surface treated Products: [Starcon Lifting and Handling Systems for Concrete elements - Surface Treated. - EPD Norge](#)

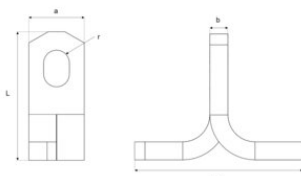
... [Read more](#)

Marking: CE-marked, batch code, load group + S(Starcon)

Finish: Untreated - Corrosion class C1 - ISO 12944-2. Hot-dip galvanized - Corrosion class C3 - ISO 12944-2

Starcon STA-F flatfoot anchor

Blueprint



Technical data

Part code	Load grp. t	Length mm	Finish	L mm	a mm	b mm	c mm	r mm	Hole mm mm	Weight kg
65012002500702	2.5	70	Hot dip galvanized	70	30	10	94	7	14x20	0.21
65012005001202	5	120	Hot dip galvanized	120	40	15	105	10	20x22	0.72
65012007501702	7.5	170	Hot dip galvanized	170	60	16	120	13	26x30	1.46