

## Stainless steel lifting eye screw DIN 580

---

### Product information



Stainless steel lifting eye for vertical lifting.

[... Read more](#)

**Material:** AISI 316

**Marking:** According to standard, CE-marked

**Temperature range:** -40°C - (+)200°C

**Finish:** Polished

**Standard:** DIN 580

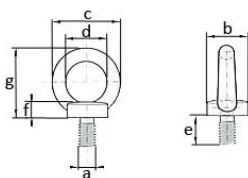
**Note:** Only for vertical lifting

**Warning:** Not to be heat-treated

**Safety factor:** 4:1

## Stainless steel lifting eye screw DIN 580

### Blueprint



### Technical data

Part code	WLL ton	Thread mm	b mm	c mm	d mm	e mm	f mm	g mm	Weight kg
421100230500	0.23	M10	25	45	25	17	8	45	0.11
421100340500	0.34	M12	30	54	30	20.5	10	53	0.18
421100070500	0.7	M16	35	63	35	27	12	62	0.28
421100120500	1.2	M20	39	71	39	30	14	70	0.45

### WORKIN LOAD LIMITS

Thread	WLL (t)	WLL (t)	WLL (t)	WLL (t)	WLL (t)	WLL (t)	WLL (t)	WLL (t)
					0 - 45°	45-60°	0 - 45°	45-60°
M6	0,08		0,16		-		-	
M8	0,14		0,28		0,1		0,14	
M10	0,23		0,46					