

Lift graded turnbuckles with closed body

Product information

Lift graded turnbuckle for professional use. Equipped with locking nuts and fork/fork ends.

... [Read more](#)



Material: Steel

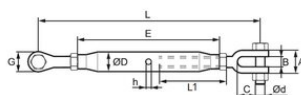
Marking: CE-marked, WLL | batch | Haklift

Finish: M6/M8 electric galvanized | M10-M52 hot dip galvanized

Safety factor: 5:1

Lift graded turnbuckles with closed body

Blueprint



Technical data

| Part code | WLL ton | Thread | A mm | B mm | C mm | D mm | E mm | G mm | d mm | h mm | L1 mm | L min. mm | L max. mm | Weight kg |
|--------------|---------|--------|------|------|------|------|------|------|------|------|-------|-----------|-----------|-----------|
| 422100020350 | 0.2 | M6 | 19 | 7 | 16 | 14.5 | 100 | 12 | M5 | 6.5 | 54 | 180 | 255 | 0.13 |
| 422100030350 | 0.32 | M8 | 23 | 9 | 22 | 17.2 | 108 | 14 | M6 | 8.5 | 59 | 210 | 285 | 0.25 |
| 422100050350 | 0.5 | M10 | 26 | 10 | 21 | 17.2 | 150 | 17 | M8 | 7 | 79 | 250 | 360 | 0.3 |
| 422100070350 | 0.7 | M12 | 33 | 13 | 26 | 21.3 | 195 | 22 | M10 | 8 | 106 | 330 | 480 | 0.65 |
| 422100120350 | 1.2 | M16 | 42 | 18 | 32 | 27 | 230 | 26 | M12 | 8 | 122 | 395 | 580 | 1.25 |
| 422100150350 | 1.5 | M20 | 50 | 20 | 38 | 34 | 270 | 32 | M16 | 12 | 145 | 460 | 680 | 2.2 |
| 422100220350 | 2.2 | M22 | 44 | 25 | 50 | 34 | 295 | 46 | M20 | 12 | 160 | 500 | 720 | 3.3 |
| 422100500350 | 3.2 | M24 | 51 | 28 | 54 | 42 | 325 | 52 | M22 | 12 | 175 | 555 | 800 | 4.6 |
| 422100700350 | 4.8 | M33 | 62 | 38 | 71.5 | 50 | 370 | 60 | M27 | 12 | 220 | 700 | 970 | 8.5 |
| 422101000350 | 6 | M39 | 79 | 45 | 83.5 | 60.3 | 400 | 75 | M33 | 16 | 230 | 780 | 1,060 | 15 |
| 422101300350 | 8.5 | M45 | 94 | 50 | 86 | 76 | 400 | 85 | M39 | 16 | 235 | 800 | 1,050 | 21 |
| 422101700350 | 11 | M52 | 98 | 58 | 97.5 | 76 | 400 | 92 | M45 | 16 | 240 | 825 | 1,050 | 24 |