

Attachment-point Ring Point RP

Product information



The JDT RP attachment-point ring point is a forged lifting point designed for load attachment in industrial lifting and handling applications. It provides a rotating and adjustable lifting connection that supports easier sling alignment while reducing the risk of unintended loosening during use. Suitable for fixed lifting points on machinery, components, and fabricated structures.

Best used for:

- Fixed lifting points requiring adjustable load direction
- Industrial lifting applications with chain or sling connections

Product benefits:

- 360° rotating body supports flexible load positioning
- 110° working range improves sling alignment flexibility
- Toolless assembly and disassembly simplify installation procedures
- Forged construction improves durability in industrial environments
- DGUV-tested and DEKRA type-approved for verified lifting compliance
- Powder-coated finish helps protect against surface wear
- 100% crack tested for improved inspection reliability

... [Read more](#)

Material: High-strength forged components

Marking: CE-marked, UKCA-marked

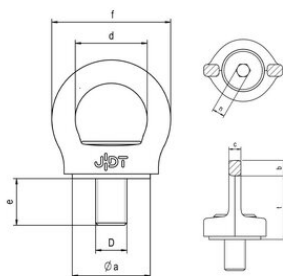
Temperature range: -40°C up to +300°C

Finish: Powder-coated, RAL 5021 waterblue

Safety factor: 4:1

Attachment-point Ring Point RP

Blueprint



Technical data

Part code	Code	WLL ton	Thread mm	Pitch DIN 13	D mm	e mm	a mm	b mm	c mm	d mm	f mm	t mm	g mm	n mm	Weight kg
42150382100008	RP 0.35	1	M8	1.25	M8	18	30	10	5	25	45	37	21	6	0.12
42150382100001	RP 0.5	1.5	M 10	1.5	M 10	18	30	10	5	25	45	37	21	6	0.13
42150382100000	RP 0.7	2.5	M 12	1.8	M 12	18	36,5	13	7	34	60	49	30	8	0.3
42150382101000	RP 1.5	4	M 16	2	M 16	20	42	14	10	36	64	51	32	10	0.4
42150382102000	RP 2.3	5.5	M 20	2.5	M 20	30	50	15	12	46	76	61	37	12	0.7
42150382103000	RP 3.2	8	M 24	3	M 24	30	64	19	15	52	90	74	47	14	1.2
42150382104000	RP 4.5	12	M 30	3.5	M 30	35	75	25	19	62	112	91	56	17	2.2