

Lifting Point RUD W-ABA

Product information



- 4:1 safety against breaking
- Patented markings for easy determination for withdraw of service
- Tempered base body which is wear-resistant
- 100% Electro-magnetic crack detection tested

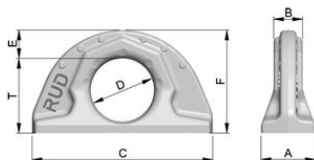
... [Read more](#)

Marking: According to standard
Standard: EN 1677-1

Safety factor: 4:1

Lifting Point RUD W-ABA

Blueprint



Technical data

Код товара	WLL ton	A mm	B mm	C mm	D, mm	E mm	F mm	T mm	Bec kg
421100080750	0,8	22	12	70	32	12	50	32	0,2
421100160750	1,6	30	16	100	35	16	57	42	0,45
421100320750	3,2	41	23	137	50	21	80	59	1,15
421100500750	5	51	27	172	60	28	99	72	2,26
421101000750	10	70	38	228	80	35	130	95	5,37
421102000750	20	90	52	272	115	40	175	135	10,72
421103150750	31,5	108	64	320	130	50	204	154	18,33