

## Connecting Link C POWERTEX

### Product information



The POWERTEX Connecting Link C is part of the Powertex G10 Lifting Sling Chain Components range. It's a quick and cost-effective part for assembling chain slings. The locking spring is encapsulated in a protective steel bushing.

Available for 6 mm up to 32 mm chain, and from WLL 1.4t up to WLL 40t.

#### Powerdex G10 Range benefits:

- 25% higher capacity compared to traditional Grade 8 components
- All POWERTEX G10 components are powder painted in luminous red
- Multi-functional master links and components are included in the range to allow quick and cost-effective assembly of chain slings
- The components meet EN 1677 part 1/2/3/4 +25% WLL
- Each forged component is crack detection tested, and samples are proof load tested.
- Each component is type tested in the factory and fatigue rated to 20,000 cycles at 1.5 times the WLL
- Full traceability through a batch number
- Replacement spare parts available
- All components are chromium 6 free
- POWERTEX 2.2 certificate enclosed with each box of components
- The components may also be used with Grade 8 chain to EN 818-2. In such a case, the chain sling needs to be rated as Grade 8 in accordance with EN 818-2 ... [Read more](#)

**Marking:** According to standard

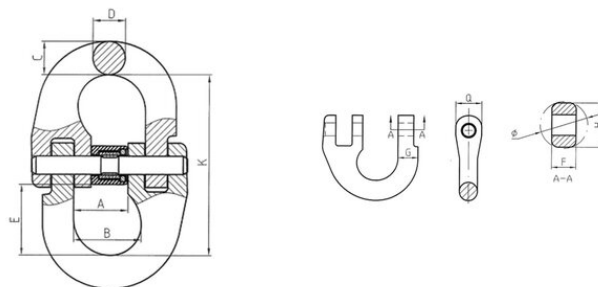
**Standard:** EN 1677-1 (+ 25% WLL), AS 3776

**Safety factor:** 4:1

**Класс:** 10

## Connecting Link C POWERTEX

### Blueprint



### Technical data

Код товара	Код	Chain diameter mm	WLL ton	EWL mm	A mm	B mm	C mm	D mm	E mm	F mm	G mm	H mm	K mm	Q mm	Ø mm mm	Bec kg
402200140310	C-6-10	6	1,4	44,5	14	16,9	8,5	7	16	5,5	7,4	11	44,5	12	11,4	0,08
402200250310	C-8-10	8	2,5	63	18,5	22,7	10,5	10	24	7,8	10,2	14	63	14	15	0,18
402200400310	C-10-10	10	4	71	23	27,7	12,6	12,6	28	9,6	12,6	18	71	18	19	0,34
402200670310	C-13-10	13	6,7	92,5	28	33,2	16,5	16,5	34	12,5	17	23	92,5	23	24,5	0,68
402201000310	C-16-10	16	10	106,5	33,5	39	20	20	39	16,2	20	29,5	106,5	29,5	31	1,22
402201600310	C-20-10	20	16	123	42	47,3	25	25	42	18	25	35,5	123	35,5	38	2,13
402201900310	C-22-10	22	19	137,5	48	55	27	27	50	21	27	39	137,5	39	41	3
402202650310	C-26-10	26	26,5	163	61	68	32	32	63	25	32	45	163	45	49	5,22
402204000310	C-32-10	32	40	197	80	87	40	40	78	33	38,5	54	197	54	61	9,55