

## Master Link MR POWERTEX (Reevable)

### Product information



The POWERTEX Master Link MR (Reevable) is part of the Powertex G10 Lifting Sling Chain Components range. This pear-shaped reevable master link with an integrated chain connector can be used to create reevable collar chain slings. In such a configuration, the sling has an MR Reeveable Masterlink at each end of the chain. Reeveable collar chain slings are excellent for lifting bundles of bars and pipes in a choke hitch or a U-lift.

Available for 8 mm up to 16 mm chain and from WLL 2.5t up to WLL 10t.

#### Powerdex G10 Range benefits:

- 25% higher capacity compared to traditional Grade 8 components
- All POWERTEX G10 components are powder-painted in pure red.
- Multi-functional master links and components are included in the range to allow quick and cost-effective assembly of chain slings
- The components meet EN 1677 part 1/2/3/4 +25% WLL
- Each forged component is crack detection tested, and samples are proof load tested.
- Each component is type tested in the factory and fatigue rated to 20,000 cycles at 1.5 times the WLL
- Full traceability through a batch number
- Replacement spare parts available
- All components are chromium 6 free
- POWERTEX 2.2 certificate enclosed with each box of components
- The components may also be used with Grade 8 chain to EN 818-2. In such a case, the chain sling needs to be rated as Grade 8 in accordance with EN 818-2 ... [Read more](#)

**Marking:** According to standard

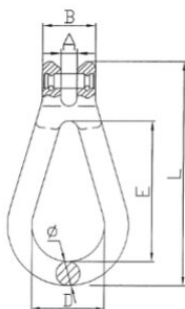
**Standard:** EN 1677-4 (+25% WLL) , AS 3776

**Safety factor:** 4:1

**Класс:** 10

## Master Link MR POWERTEX (Reevable)

### Blueprint



### Technical data

| Код товара   | Chain diameter mm | WLL ton | MBL ton | EWL mm | A mm | B mm | D mm | E mm | L mm | Ø mm mm | Bec kg |
|--------------|-------------------|---------|---------|--------|------|------|------|------|------|---------|--------|
| 402100250940 | 8                 | 2,5     | 10      | 106    | 10   | 32,8 | 45   | 87   | 139  | 15      | 0,5    |
| 402100400940 | 10                | 4       | 16      | 132    | 12   | 42   | 60   | 108  | 174  | 19      | 1      |
| 402100670940 | 13                | 6,7     | 26,8    | 177    | 16,5 | 55,5 | 66,5 | 137  | 228  | 22      | 1,8    |
| 402101000940 | 16                | 10      | 40      | 203    | 19   | 68   | 72   | 165  | 264  | 26      | 2,8    |