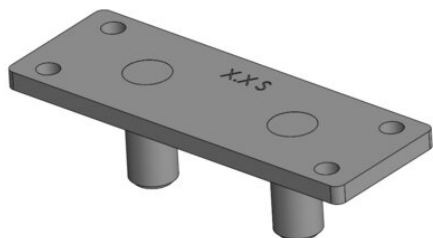


Holding Plate for STA Former Starcon

Product information

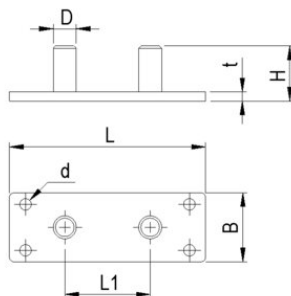
A holding plate is used for fastening the STA former to a wooden formwork. The holding plate has 2 pins on which the former is mounted and is fixed with the anchor mounted.

... [Read more](#)



Holding Plate for STA Former Starcon

Blueprint



Technical data

Код товара	Load grp. t	L mm	B mm	H mm	L1 mm	D mm	d mm	t mm
650351025001	2,5	69	21	24	27	10	5	4
650351050001	5	85	30	25	37	10	5	4
650351100001	10	124	42	44	51,5	12	5	4
650351260001	26	178	65	54	69	16	6	8