

Boltable lifting eyes

Product information

Boltable lifting eye for lifting. Delivered without bolts. Bolt grade must be min 8.8
... [Read more](#)

Marking: According to standard, CE-marked

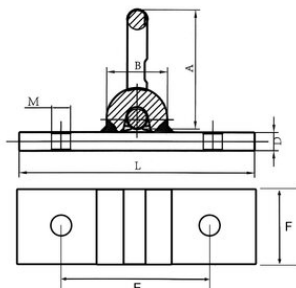
Standard: EN 1677-1

Safety factor: 4:1



Boltable lifting eyes

Blueprint



Technical data

Код товара	WLL ton	Base dimensions mm	A mm	B mm	D, mm	Mmm mm	L mm	E mm	F mm	Вес kg
4215NS8PUL1	1	155 x 51	78	40	12	12,5	155	100	51	1,1
4215NS8PUL2	2	155 x 51	80,5	40	14	14,5	155	100	51	1,2
4215NS8PUL3	3	155 x 51	94	46,5	16	16,5	155	100	51	1,5
4215NS8PUL5	5	180 x 60	118	60	20	22,5	180	120	60	2,6