

Lifting eye nuts DIN 582

Product information

Lifting eye nuts for vertical lifting

... [Read more](#)



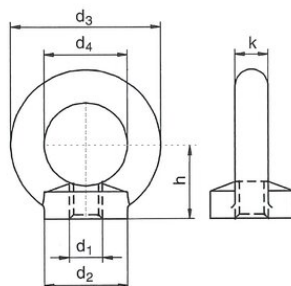
Marking: According to standard, CE-marked

Standard: DIN 582

Safety factor: 4:1

Lifting eye nuts DIN 582

Blueprint



Technical data

| Код товара | WLL ton | Thread mm | Packing | Thread pitch mm | d1 mm mm | d2 mm mm | d3 mm mm | d4 mm | h mm | k mm | Вес kg |
|--------------|---------|-----------|---------|-----------------|----------|----------|----------|-------|------|------|--------|
| 421100010522 | 0,06 | M6 | 50 | 1 | M6 | 20 | 36 | 20 | 18 | 8 | 0,045 |
| 421100140520 | 0,14 | M8 | 50 | 1,25 | M8 | 20 | 36 | 20 | 18 | 8 | 0,05 |
| 421100230520 | 0,23 | M10 | 50 | 1,5 | M10 | 25 | 45 | 25 | 22,5 | 10 | 0,09 |
| 421100340520 | 0,34 | M12 | 25 | 1,75 | M12 | 30 | 54 | 30 | 26 | 12 | 0,16 |
| 421100340525 | 0,34 | M14 | 25 | 2 | M14 | 35 | 63 | 35 | 30,5 | 14 | 0,24 |
| 421100070520 | 0,7 | M16 | 10 | 2 | M16 | 35 | 63 | 35 | 30,5 | 14 | 0,24 |
| 421100120520 | 1,2 | M20 | 10 | 2,5 | M20 | 40 | 72 | 40 | 35 | 16 | 0,36 |
| 421100180520 | 1,8 | M24 | 1 | 3 | M24 | 50 | 90 | 50 | 45 | 20 | 0,72 |