

Lifting eye screw DIN 580

Product information

Lifting eye screws for vertical lifting

... [Read more](#)



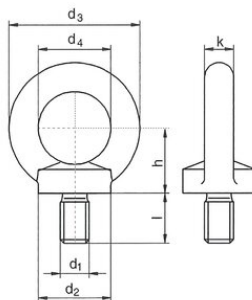
Marking: According to standard, CE-marked

Standard: DIN 580

Safety factor: 4:1

Lifting eye screw DIN 580

Blueprint



Technical data

| Код товара | WLL ton | Thread mm | Packing | Thread pitch mm | d1 mm mm | d2 mm mm | d3 mm mm | d4 mm mm | h mm mm | k mm mm | l mm mm | Bec kg |
|--------------|---------|-----------|---------|-----------------|----------|----------|----------|----------|---------|---------|---------|--------|
| 421100010492 | 0,08 | M6 | 50 | 1 | M6 | 20 | 36 | 20 | 18 | 8 | 13 | 0,045 |
| 421100140490 | 0,14 | M8 | 50 | 1,25 | M8 | 20 | 36 | 20 | 18 | 8 | 13 | 0,05 |
| 421100230490 | 0,23 | M10 | 50 | 1,5 | M10 | 25 | 45 | 25 | 22,5 | 10 | 17 | 0,09 |
| 421100340490 | 0,34 | M12 | 25 | 1,75 | M12 | 30 | 54 | 30 | 26 | 12 | 20,5 | 0,16 |
| 421100340495 | 0,34 | M14 | 25 | 2 | M14 | 35 | 63 | 35 | 30,5 | 14 | 27 | 0,24 |
| 421100070490 | 0,7 | M16 | 10 | 2 | M16 | 35 | 63 | 35 | 30,5 | 14 | 27 | 0,24 |
| 421100120490 | 1,2 | M20 | 10 | 2,5 | M20 | 40 | 72 | 40 | 35 | 16 | 30 | 0,36 |
| 421100180490 | 1,8 | M24 | 1 | 3 | M24 | 50 | 90 | 50 | 45 | 20 | 36 | 0,72 |
| 421100320495 | 3,2 | M33 | 1 | 3,5 | M33 | 65 | 108 | 60 | 55 | 24 | 45 | 1,3 |
| 421100320490 | 3,2 | M30 | 1 | 3,5 | M30 | 65 | 108 | 60 | 55 | 24 | 45 | 1,32 |
| 421100460495 | 4,6 | M39 | 1 | 4 | M39 | 75 | 126 | 70 | 65 | 28 | 54 | 2,02 |
| 421100460490 | 4,6 | M36 | 1 | 4 | M36 | 75 | 126 | 70 | 65 | 28 | 54 | 2,08 |
| 421100630495 | 6,3 | M45 | 1 | 4,5 | M45 | 85 | 144 | 80 | 75 | 32 | 63 | 3,04 |
| 421100630490 | 6,3 | M42 | 1 | 4,5 | M42 | 85 | 144 | 80 | 75 | 32 | 63 | 3,11 |
| 421100860495 | 8,6 | M52 | 1 | 5 | M52 | 100 | 166 | 90 | 85 | 38 | 68 | 4,95 |
| 421100860490 | 8,6 | M48 | 1 | 5 | M48 | 100 | 166 | 90 | 85 | 38 | 68 | 5,02 |
| 421101150490 | 11,5 | M56 | 1 | 5,5 | M56 | 110 | 184 | 100 | 95 | 42 | 78 | 6,69 |
| 421101600490 | 16 | M64 | 1 | 6 | M64 | 120 | 206 | 110 | 105 | 48 | 90 | 9,3 |