

Master Link MR POWERTEX (Reevable)

Інформація про товар



The POWERTEX Master Link MR (Reevable) is part of the Powertex G10 Lifting Sling Chain Components range. This pear-shaped reevable master link with an integrated chain connector can be used to create reevable collar chain slings. In such a configuration, the sling has an MR Reeveable Masterlink at each end of the chain. Reeveable collar chain slings are excellent for lifting bundles of bars and pipes in a choke hitch or a U-lift.

Available for 8 mm up to 16 mm chain and from WLL 2.5t up to WLL 10t.

Powerdex G10 Range benefits:

- 25% higher capacity compared to traditional Grade 8 components
- All POWERTEX G10 components are powder-painted in pure red.
- Multi-functional master links and components are included in the range to allow quick and cost-effective assembly of chain slings
- The components meet EN 1677 part 1/2/3/4 +25% WLL
- Each forged component is crack detection tested, and samples are proof load tested.
- Each component is type tested in the factory and fatigue rated to 20,000 cycles at 1.5 times the WLL
- Full traceability through a batch number
- Replacement spare parts available
- All components are chromium 6 free
- POWERTEX 2.2 certificate enclosed with each box of components
- The components may also be used with Grade 8 chain to EN 818-2. In such a case, the chain sling needs to be rated as Grade 8 in accordance with EN 818-2 ... [Read more](#)

Маркування: Згідно зі стандартом

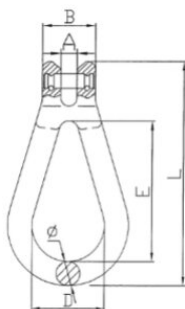
Стандарт: EN 1677-4 (+25% WLL) , AS 3776

Коефіцієнт запасу міцності: 4:1

Клас: 10

Master Link MR POWERTEX (Reevable)

Креслення



Technical data

Код товару	Діаметр ланцюга мм	Вантажопідйомність тон	Руйнівне навантаження тн тон	Ефективна робоча довжина мм	A мм	B мм	D мм	E мм	L мм	Ø мм	Вага кг
402100250940	8	2,5	10	106	10	32,8	45	87	139	15	0,5
402100400940	10	4	16	132	12	42	60	108	174	19	1
402100670940	13	6,7	26,8	177	16,5	55,5	66,5	137	228	22	1,8
402101000940	16	10	40	203	19	68	72	165	264	26	2,8